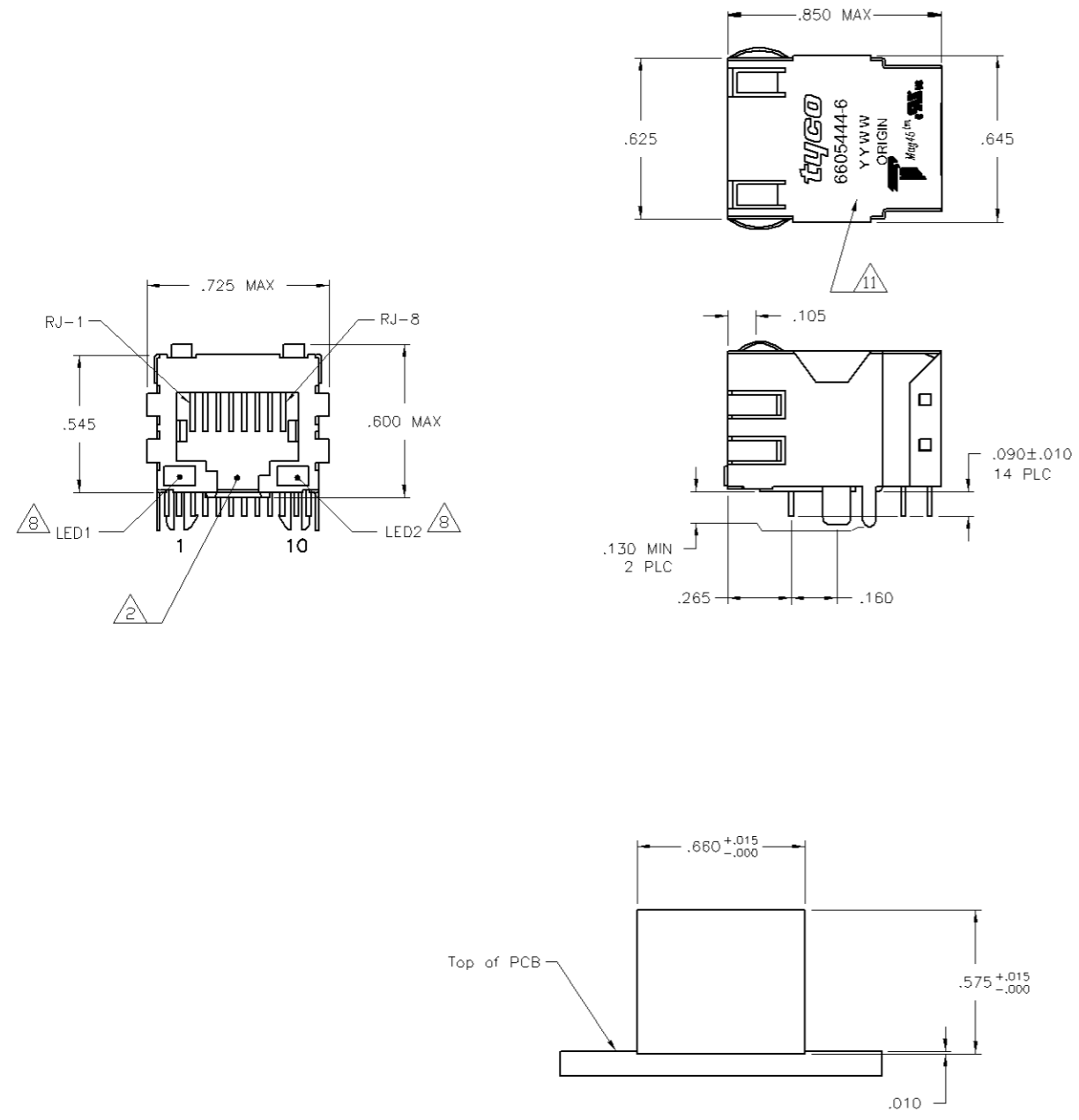


THIS DRAWING IS UNPUBLISHED. RELEASED FOR PUBLICATION. BY TYCO ELECTRONICS CORPORATION. ALL RIGHTS RESERVED.

LOC	REV	DESCRIPTION	DATE	BY	APP
AA	22				
C		PER ECO-08-028903	210CR2008	VL	TX

MECHANICAL:



- 1 MATERIALS:
HOUSING - THERMOPLASTIC PET POLYESTER FLAMMABILITY RATING UL 94V-0.
SHIELD - .010" THICK, C26800 BRASS PREPLATED WITH 30μINCH SEMI-BRIGHT NICKEL. SOLDER TABS POST DIPPED WITH 100μINCH MIN SAC SOLDER.
MOD JACK CONTACTS - 0.0157 X 0.018" PHOSPHOR BRONZE, 50μINCH MIN OVERALL NICKEL UNDERPLATE, WITH SELECT 50μINCH MIN HARD GOLD FINISH PLATE SOLDER TAILS WITH 100μINCH MIN MATTE TIN AND/OR SAC SOLDER DIP.
LIGHT EMITTING DIODE(LED) - DIFFUSED EPOXY LENS, .020" x .020" CARBON STEEL WIREFRAME LEADS PRE-PLATED WITH 80μINCH SILVER OVER 40μINCH NICKEL UNDERPLATE OVER 40μINCH COPPER UNDERPLATE. POST-PLATED WITH 100μINCH MIN MATTE TIN AND/OR SAC SOLDER DIP OR PURE TIN SOLDER DIP.
- 2 RJ45 JACK CAVITY CONFORMS TO FCC RULES AND REGULATIONS PART 68, SUB PART F.
- 3 MAGNETICS
-IMPEDANCE: 100 OHMS
-TURNS RATIO (CHIP CABLE): 1:1 ALL FOUR PAIRS
-OPEN CIRCUIT INDUCTANCE (OCL): 350μH MIN @100kHz, 0.1VRMS, 8mADC BIAS FROM 0°C TO 70°C, ALL FOUR PAIRS
-ALL FOUR PAIRS BI-DIRECTIONAL
-PERFORMANCE @ 25°C:
 INSERTION LOSS (IL): 1.1dB MAX FROM 0.5MHz TO 100MHz
 RETURN LOSS (RL): 18dB MIN FROM 0.5MHz TO 40MHz
 12-20LOG(f/80)dB MIN FROM 40.1MHz TO 100MHz
 CROSSTALK ATTENUATION: 35dB MIN FROM 0.5MHz TO 40MHz
 33-20LOG(f/50)dB MIN FROM 40.1MHz TO 100MHz
 COMMON MODE REJECTION RATIO (CMRR): 30dB MIN FROM 0.5MHz TO 100MHz
-ISOLATION VOLTAGE: COMPLIES WITH IEEE802.3 2002, PARA 40.6.1.1, ITEM a or b.
- 4 C1 IS AN 1000 pF, 2KV DECOUPLING CAPACITOR.
- 5 OPERATING TEMPERATURE: FROM 0°C TO +70°C.
- 6 R1-R4 = 75 OHMS, 1/16 W, 5% RESISTORS.
- 7 C2-C5 = 0.1uF, 10%, 50V, X7R CAPACITORS.
- 8 LED COMPLIANT WITH IEC60825-1 SAFETY OF LASER PRODUCTS. WHEN OPERATED UP TO 20 mA. THE 250 OHM RESISTOR IS INCLUDED IN THE LEDS FOR 1-6605444-1 ONLY.
- 9 INDICATED MAGNETIC CONNECTIONS ARE SYMMETRICAL TO SUPPORT AUTO-MDI/MDIX.
- 10 LED PEAK WAVELENGTH: GREEN(λ) = 565nm
YELLOW(λ) = 585nm
ORANGE(λ) = 610nm
- 11 TRADEMARK, PART NUMBER, DATE CODE, COUNTRY OF ORIGIN AND AGENCY APPROVAL MARKING IN APPROXIMATE LOCATION SHOWN.

Suggested Panel Cutout

GREEN	GREEN/ORANGE	1-6605444-8
GREEN/ORANGE	YELLOW	1-6605444-3
GREEN	GREEN	1-6605444-1
GREEN/YELLOW	GREEN/YELLOW	6605444-6
LED1	LED2	PART NUMBER

THIS DRAWING IS A CONTROLLED DOCUMENT.

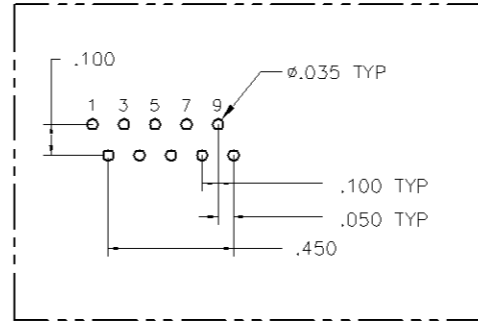
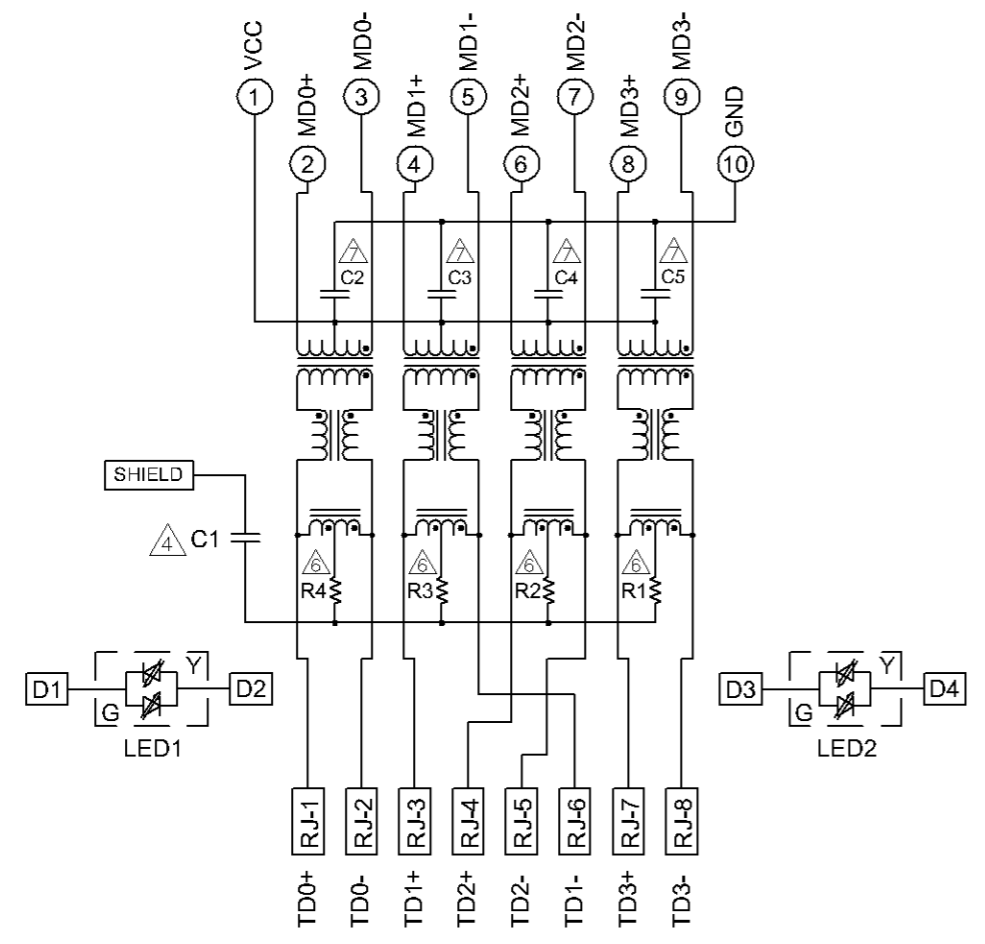
DESIGNED BY: G. ATTADIA - DOCKS	DATE: 08/19/2008	REVISED BY: D. FAROLE	DATE: 08/19/2008
PRODUCT SPEC: 108-2100	APPLICATION SPEC: -	SIZE: A1	CAGE CODE: 00779
CUSTOMER DRAWING		SCALE: 1:1	SHEET 1 OF 2

1X1 MAG45(TM), 4G4P1 GIGABIT ETHERNET SCHEMATIC (10 PIN FOOTPRINT), 4G05P1 SERIES MAGNETIC CIRCUIT, SHIELDED, WITH LEDS

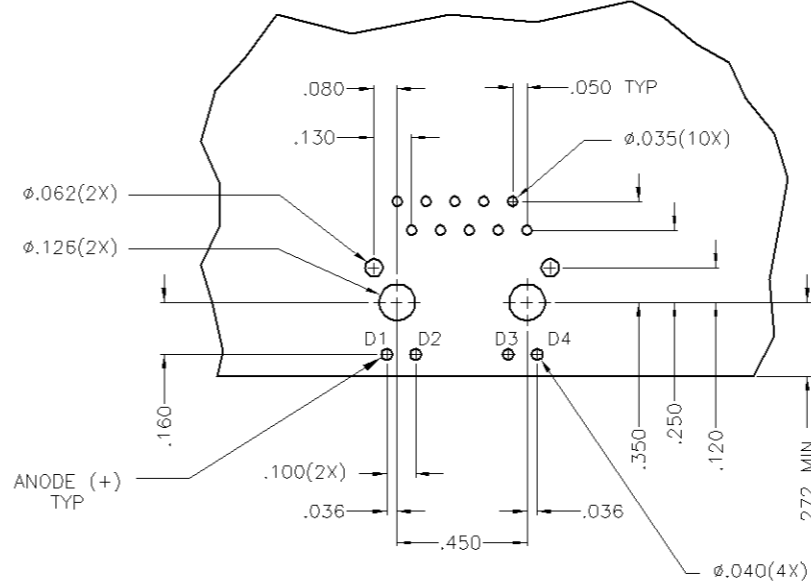
6605444

ELECTRICAL:

4G05P1 Series GIGABIT Magnetic Circuit



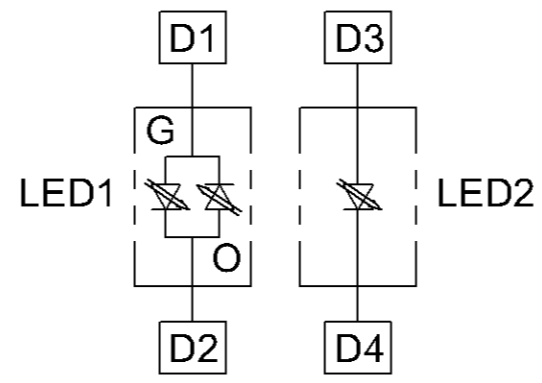
Pin Designations



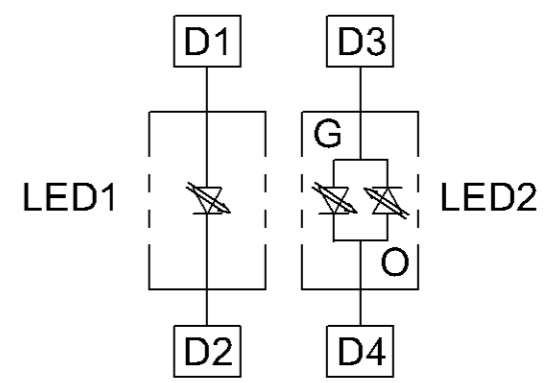
Suggested PCB Layout (Component Side)



LED Configuration For 1-6605444-1 ONLY



LED CONFIGURATION FOR 1-6605444-3 ONLY



LED CONFIGURATION FOR 1-6605444-8 ONLY

THIS DRAWING IS A CONTROLLED DOCUMENT.		REVISED BY: G. ATTADIA - DOCKS		Tyco Electronics Corporation	
DRAWN BY: D. FAROLE		DATE: 08/21/00		Harrisburg, Pa 17105-3608	
CHECKED BY: D. FAROLE		DATE: 08/21/00		1X1 MAG45(TM), 4G4P1 GIGABIT ETHERNET	
MATERIAL: SEE SHEET 1		PART NUMBER: 108-2100		SCHEMATIC (10 PIN FOOTPRINT), 4G05P1 SERIES	
SCALE: 1:1		DRAWING NO: A1 00779		MAGNETIC CIRCUIT, SHIELDED, WITH LEADS	
SHEET 2 OF 2		REV C		CUSTOMER DRAWING	